



**USAID**  
FROM THE AMERICAN PEOPLE



**PRO-WASH**  
Practices, Research and Operations  
in Water, Sanitation and Hygiene



**SCALE**  
Strengthening Capacity in Agriculture  
Livelihoods and Environment

# Practices, Research and Operations in Water, Sanitation and Hygiene & Strengthening Capacity in Agriculture, Livelihoods, and Environment



## Collaborating with Food Security and Livelihood Practitioners to Enhance Activities, Adopt Best Practices and Capture Learning

We are here to support you to work more effectively, apply research to practice, and foster sustainable programming. We support interventions in food and nutrition security activities across USAID/BHA's portfolio in *emergency and early recovery, risk reduction, and resilience (ER4)* settings. We partner with research institutions, local service providers, communities of practice, and technical working groups to support USAID's implementing community. Connect with us to learn from and collaborate with others in your sector.

## Who We Are

We are a team of agriculture, natural resource management, and water, sanitation, and hygiene (WASH) technical advisors with deep expertise in adult learning, social and behavior change, facilitation, and knowledge sharing. We collaborate with implementing partners (IPs) to enhance the impact, sustainability, and scalability of BHA-funded WASH, integrated water resource management, agriculture, natural resource management, and livelihood activities.

## QUICK FACTS

### Funder:

USAID's Bureau for  
Humanitarian Assistance  
(BHA)

### Duration:

January 2023–February 2027

### Implementers:

Save the Children and  
Mercy Corps

### History:

We are a combination  
and continuation of  
two previous awards:  
PRO-WASH and SCALE

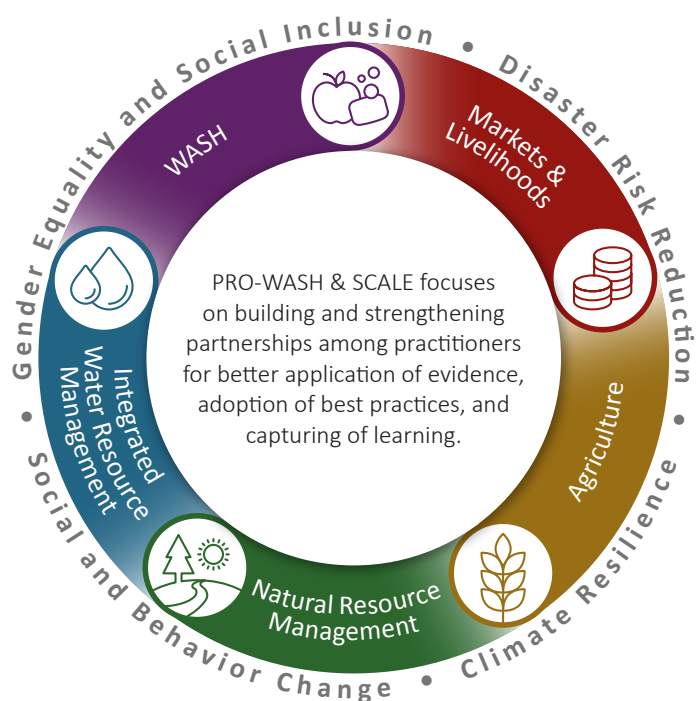
## What We Do

PRO-WASH & SCALE works alongside practitioners to *enhance program design; apply localized knowledge; adopt best practices; document and share lessons learned, and support sustainable stakeholder linkages.*

Three core pillars organize our work:

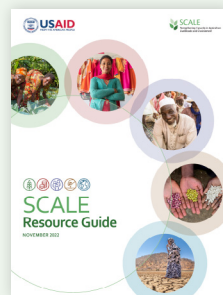
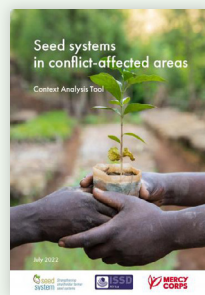
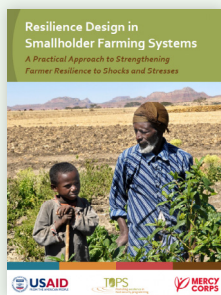
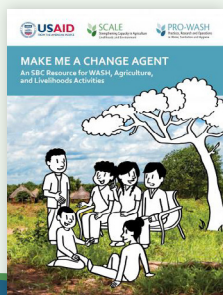
- **Capacity Strengthening and Localization**—We identify specific IP needs and match them with relevant resources that are tailored to their context. Our capacity building approaches include peer-to-peer learning, just-in-time technical assistance, in-person and remote training, coaching, and mentorships. We work with subject matter experts, learning partners, and IPs. We use adult learning techniques to strengthen capacity and build on local knowledge.
- **Applied Research, Adaptation, and Knowledge Management**—We work with IPs, research institutions, and local partners to nurture lasting practices of developing, sharing, and applying meaningful analysis and best practices. In collaboration with IPs, PRO-WASH & SCALE designs research and learning agendas, funds research, and captures lessons learned for information sharing.
- **Coordination and Collaboration**—We foster sustainable connections among practitioners to leverage relationships, best practices, and opportunities for learning, research, and capacity strengthening. We work in partnership with global, national, and regional working groups and communities of practice.

## Sectors We Support



## Learn More

If you are an implementer, local institution, researcher, education institution, or donor, we would love to hear from you. Reach out to us if you are interested in collaborating with us on the above activities. Some examples of what we produce:



## CONTACT US

[prowashandscale@savechildren.org](mailto:prowashandscale@savechildren.org)

[www.fsnnetwork.org/prowashandscale](http://www.fsnnetwork.org/prowashandscale)

This brief was made possible by the generous support of the American people through the United States Agency for International Development (USAID). The contents are the responsibility of the PRO-WASH & SCALE Award and do not necessarily reflect the views of USAID or the United States Government.